

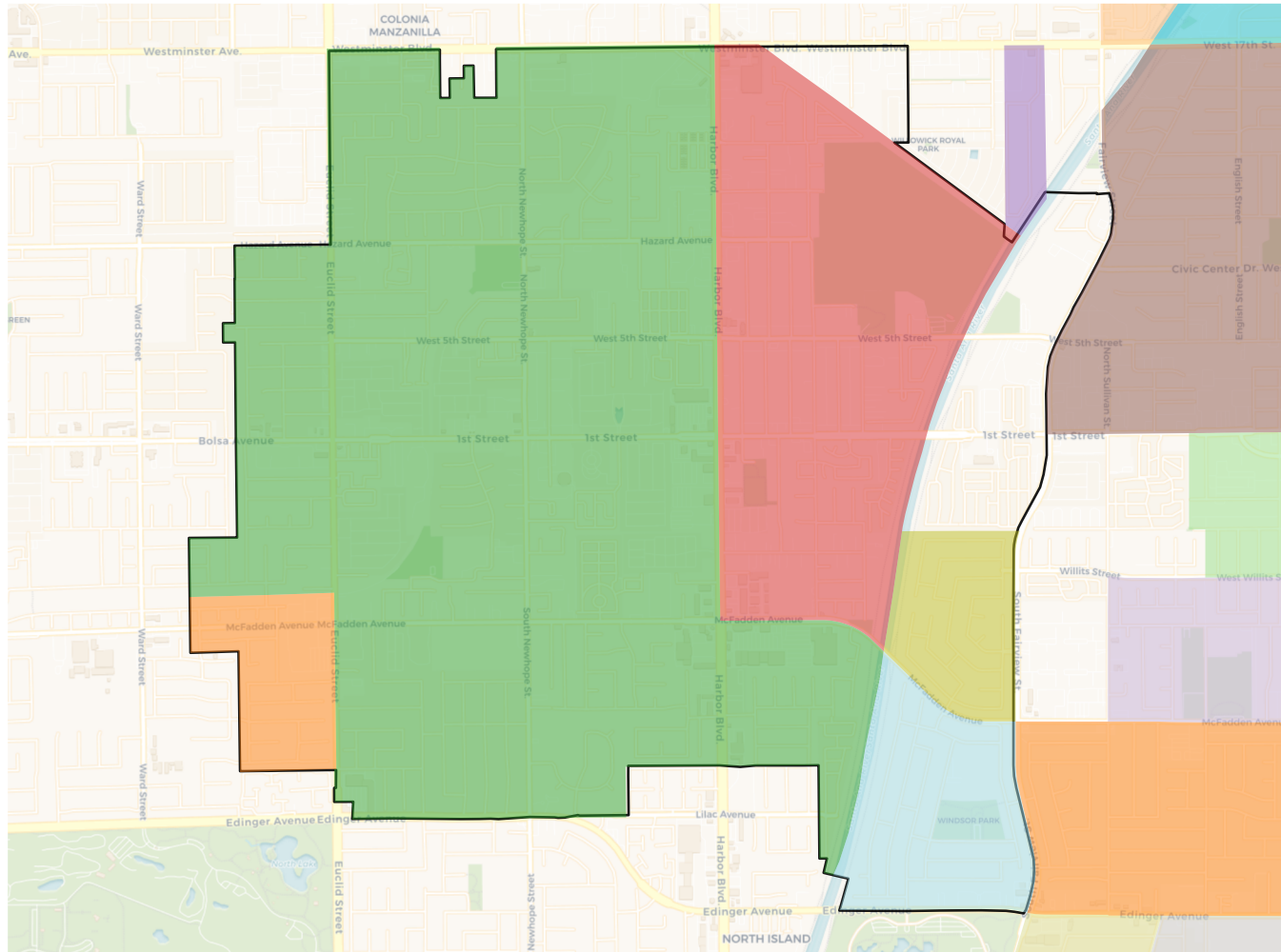
### 2020 Census

	A	B	C	D	E	F
Population	52,904	52,024	50,249	50,330	51,772	54,374
Deviation	962	82	-1,693	-1,612	-170	2,432
Deviation %	1.9%	0.2%	-3.3%	-3.1%	-0.3%	4.7%
Other	3,302	7,505	9,966	1,692	6,065	3,752
Other %	6.2%	14.4%	19.8%	3.4%	11.7%	6.9%
Latino	31,274	36,509	36,496	46,545	40,935	47,309
Latino %	59.1%	70.2%	72.6%	92.5%	79.1%	87.0%
Asian	18,008	7,425	3,189	1,745	4,151	2,966
Asian %	34.0%	14.3%	6.3%	3.5%	8.0%	5.5%
Black	320	585	598	348	621	347
Black %	0.6%	1.1%	1.2%	0.7%	1.2%	0.6%

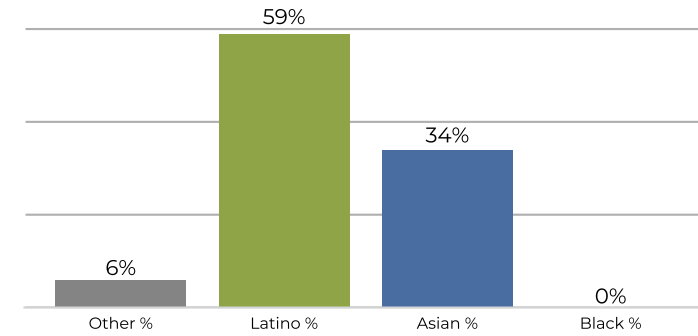
### Citizen Voting Age Population (CVAP)

	A	B	C	D	E	F
Total CVAP	29,690	31,452	25,730	19,358	23,603	24,519
Other CVAP	3,215	7,593	9,619	1,512	5,024	3,642
Other CVAP %	10.8%	24.1%	37.4%	7.8%	21.3%	14.9%
Latino CVAP	13,699	17,902	13,450	16,264	15,170	18,376
Latino CVAP %	46.1%	56.9%	52.3%	84.0%	64.3%	74.9%
Asian CVAP	12,600	5,402	1,961	1,229	3,159	2,151
Asian CVAP %	42.4%	17.2%	7.6%	6.3%	13.4%	8.8%
Black CVAP	176	556	700	353	250	350
Black CVAP %	0.6%	1.8%	2.7%	1.8%	1.1%	1.4%

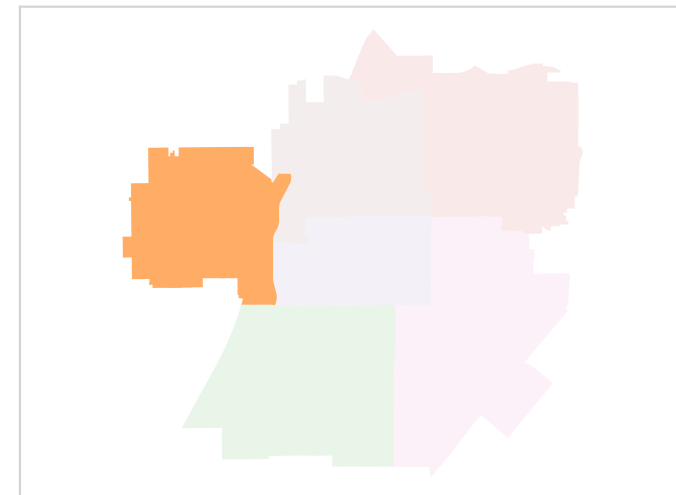
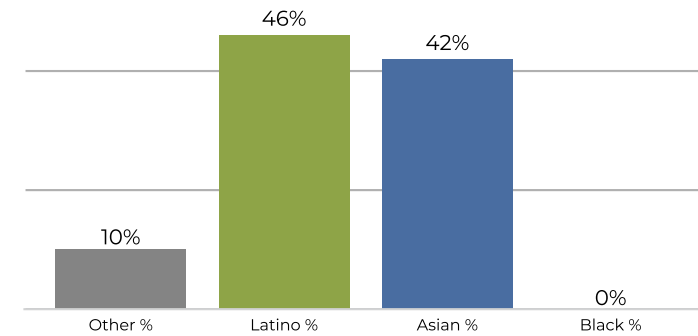
## District A



## 2020 Census

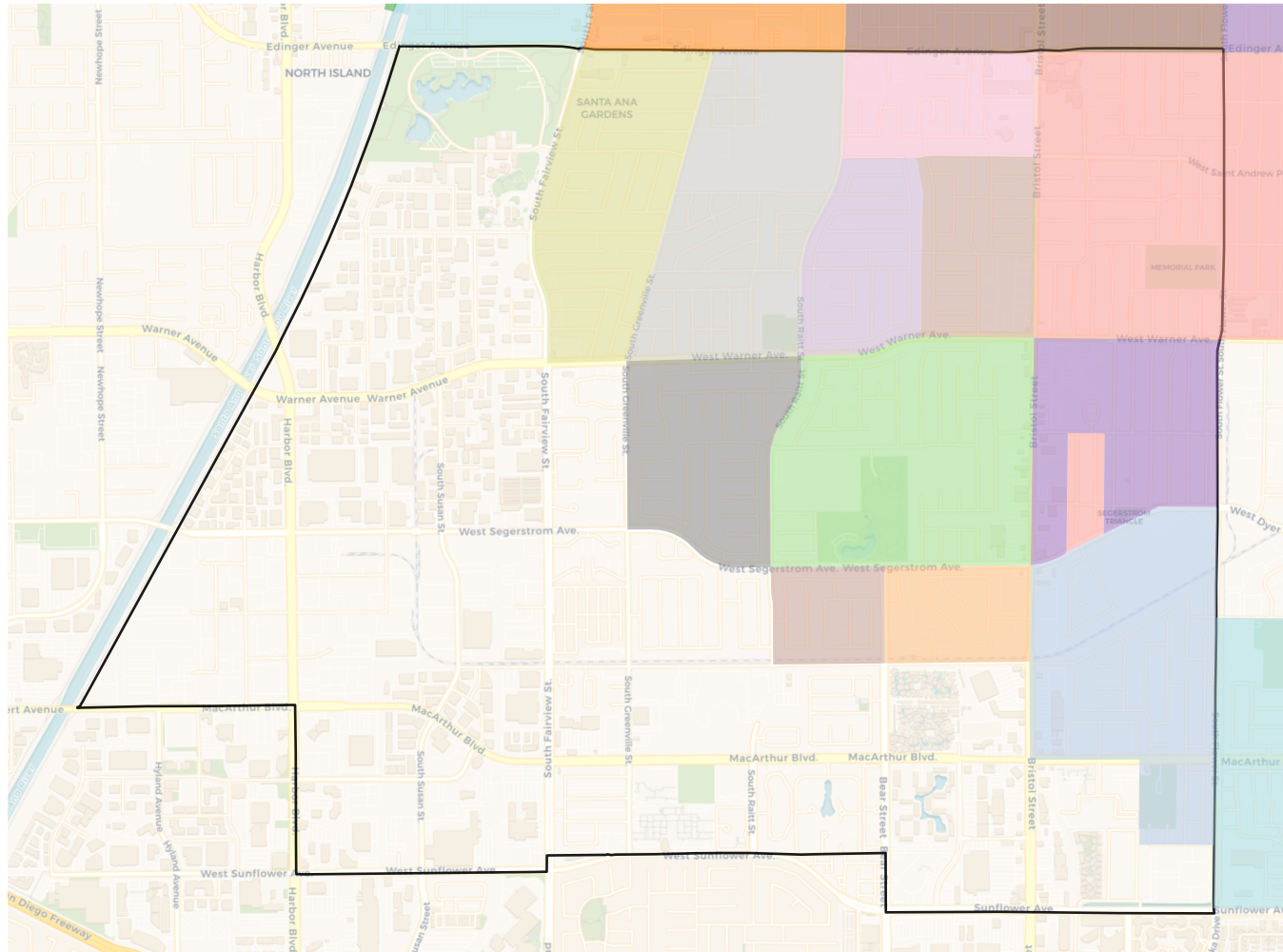


## Citizen Voting Age Population

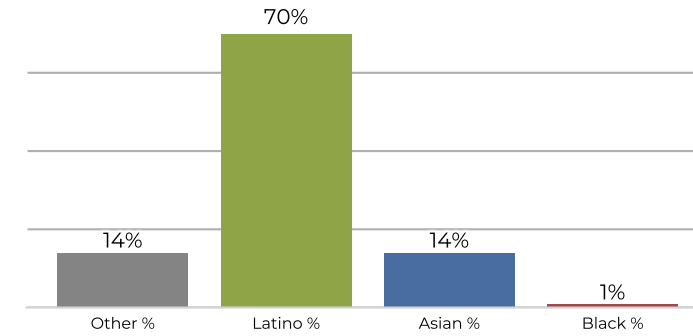


Population	Deviation	Deviation %	Other	Other %	Latino	Latino %	Asian	Asian %	Black	Black %
52,904	962	1.9%	3,302	6.2%	31,274	59.1%	18,008	34.0%	320	0.6%
Total CVAP	Other CVAP	Other CVAP %	Latino CVAP	Latino CVAP %	Asian CVAP	Asian CVAP %	Black CVAP	Black CVAP %		
29,690	3,215	10.8%	13,699	46.1%	12,600	42.4%	176	0.6%		

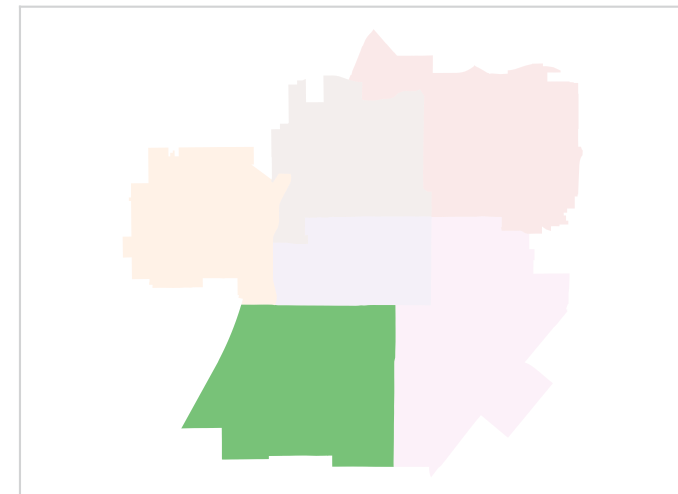
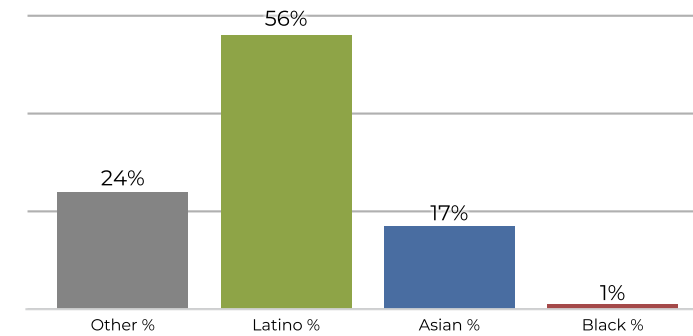
## District B



## 2020 Census



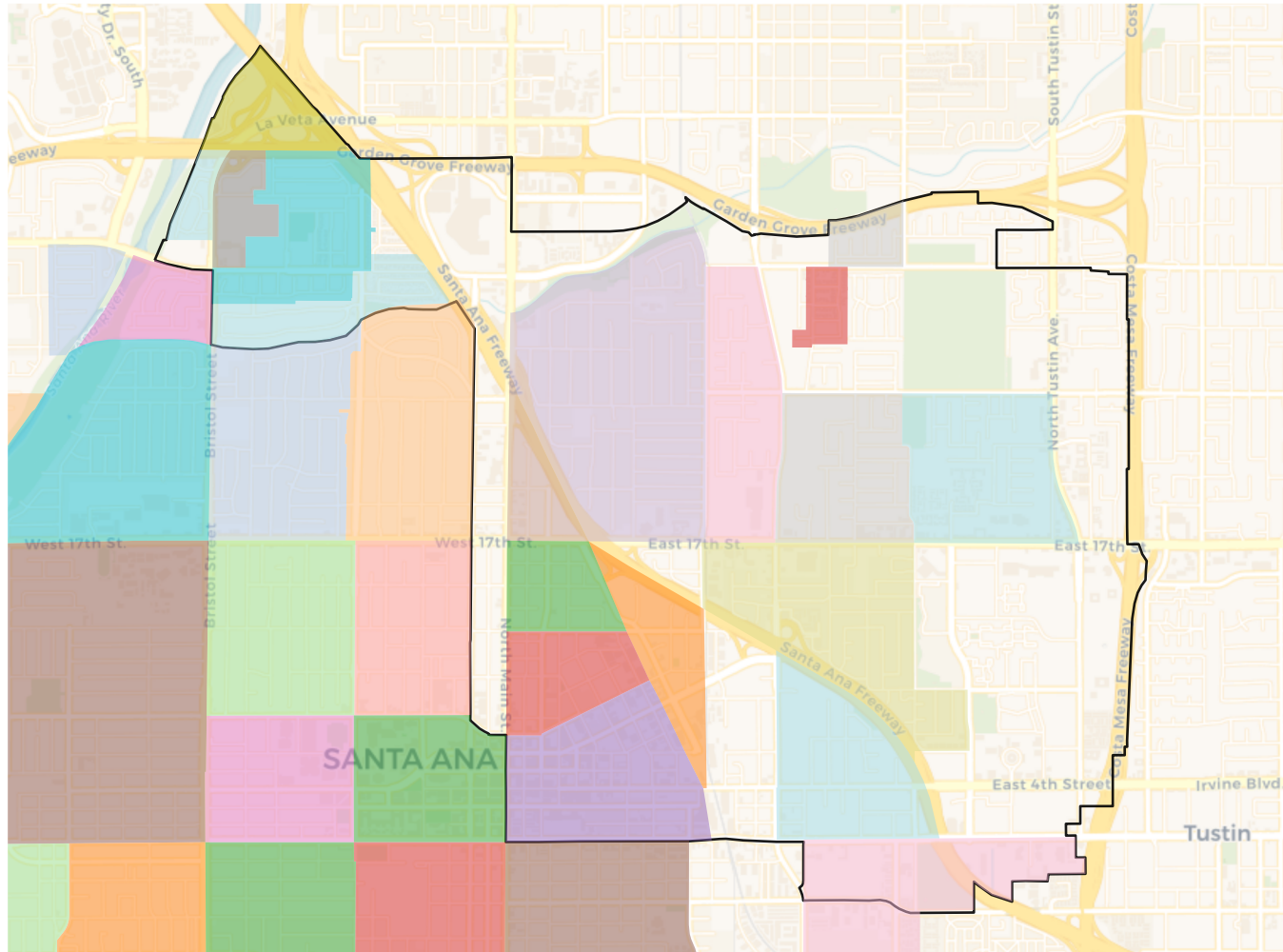
## Citizen Voting Age Population



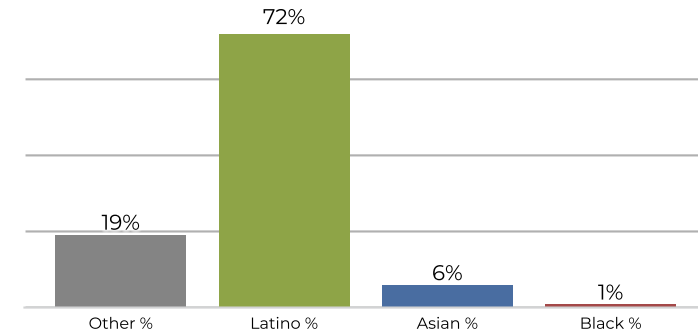
Population	Deviation	Deviation %	Other	Other %	Latino	Latino %	Asian	Asian %	Black	Black %
52,024	82	0.2%	7,505	14.4%	36,509	70.2%	7,425	14.3%	585	1.1%
Total CVAP	Other CVAP	Other CVAP %	Latino CVAP	Latino CVAP %	Asian CVAP	Asian CVAP %	Black CVAP	Black CVAP %		
31,452	7,593	24.1%	17,902	56.9%	5,402	17.2%	556	1.8%		



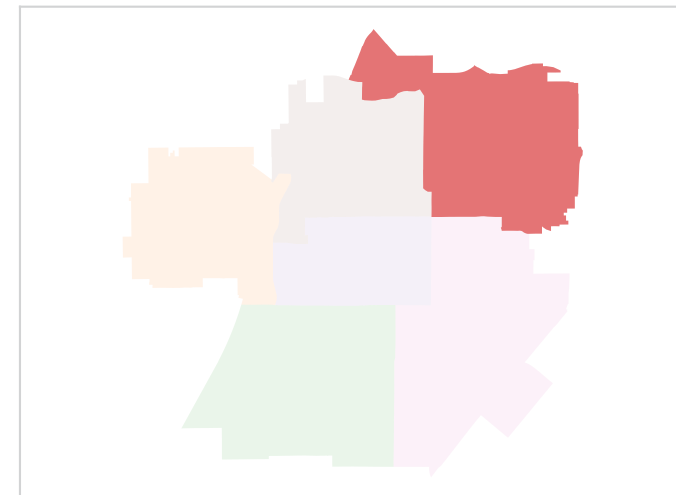
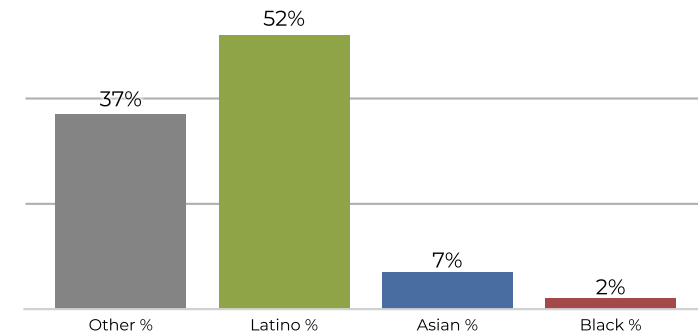
## District C



## 2020 Census

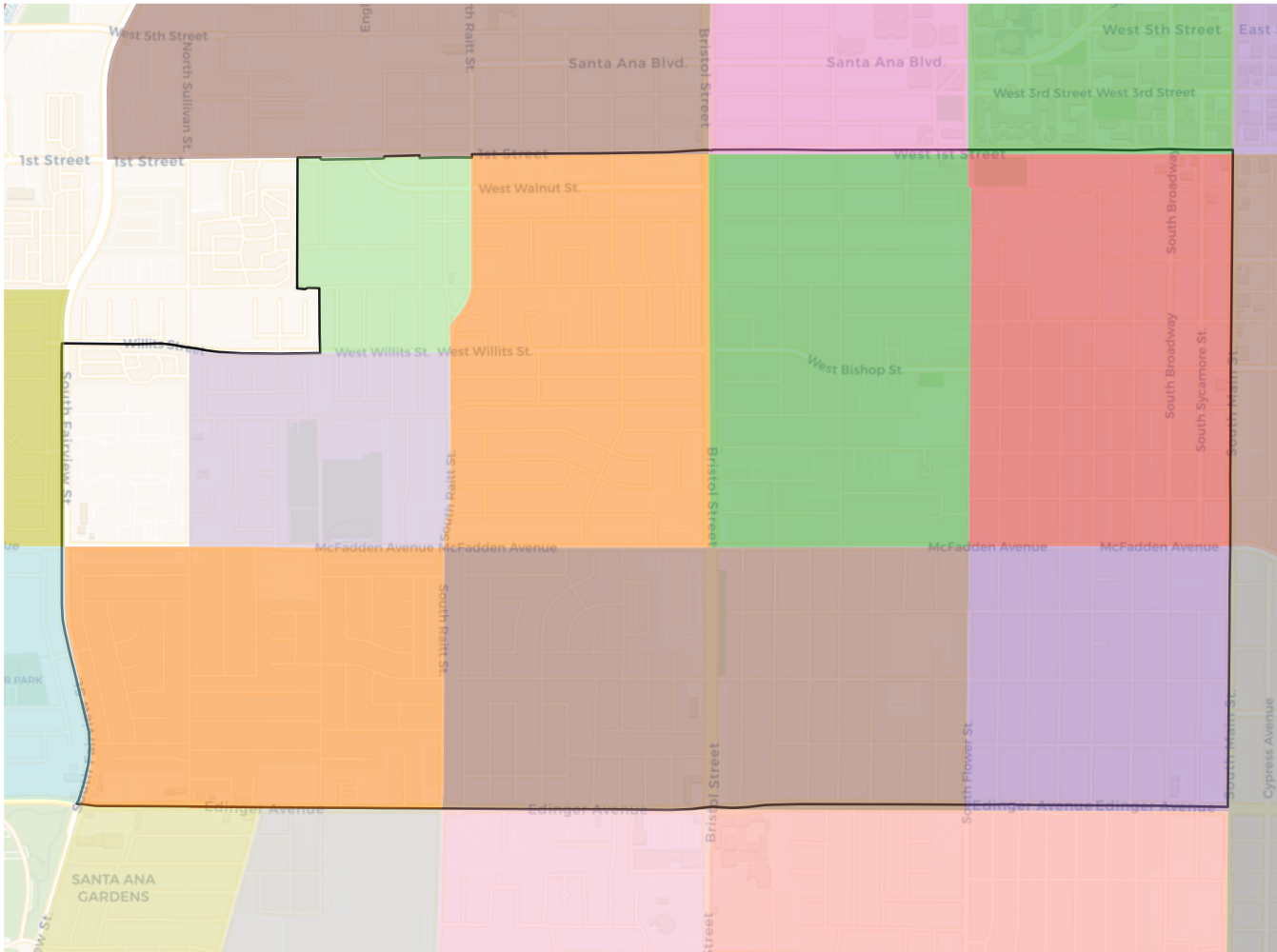


## Citizen Voting Age Population

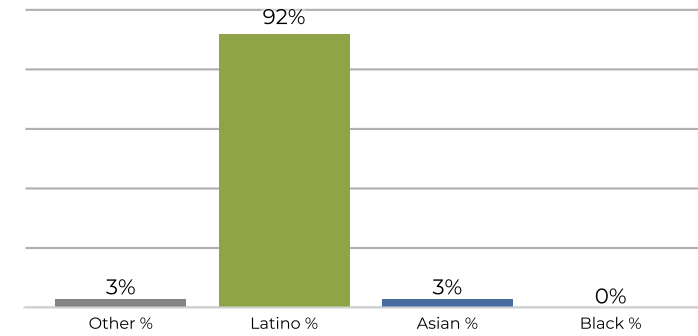


Population	Deviation	Deviation %	Other	Other %	Latino	Latino %	Asian	Asian %	Black	Black %
50,249	-1,693	-3.3%	9,966	19.8%	36,496	72.6%	3,189	6.3%	598	1.2%
Total CVAP	Other CVAP	Other CVAP %	Latino CVAP	Latino CVAP %	Asian CVAP	Asian CVAP %	Black CVAP	Black CVAP %		
25,730	9,619	37.4%	13,450	52.3%	1,961	7.6%	700	2.7%		

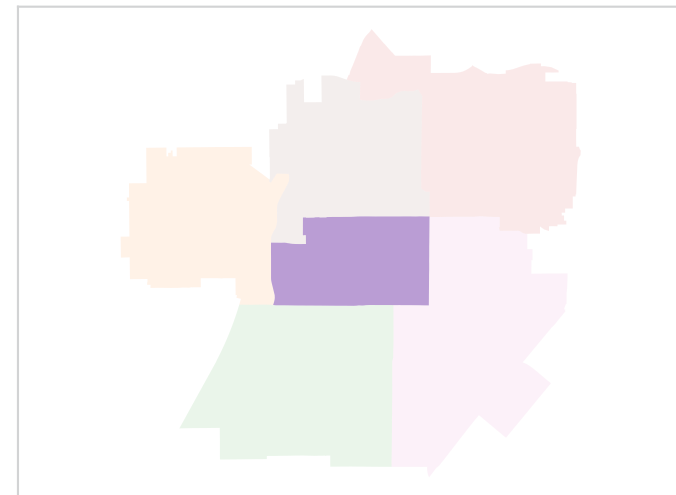
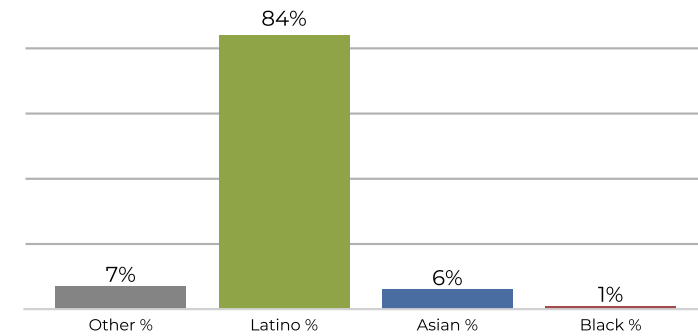
## District D



## 2020 Census

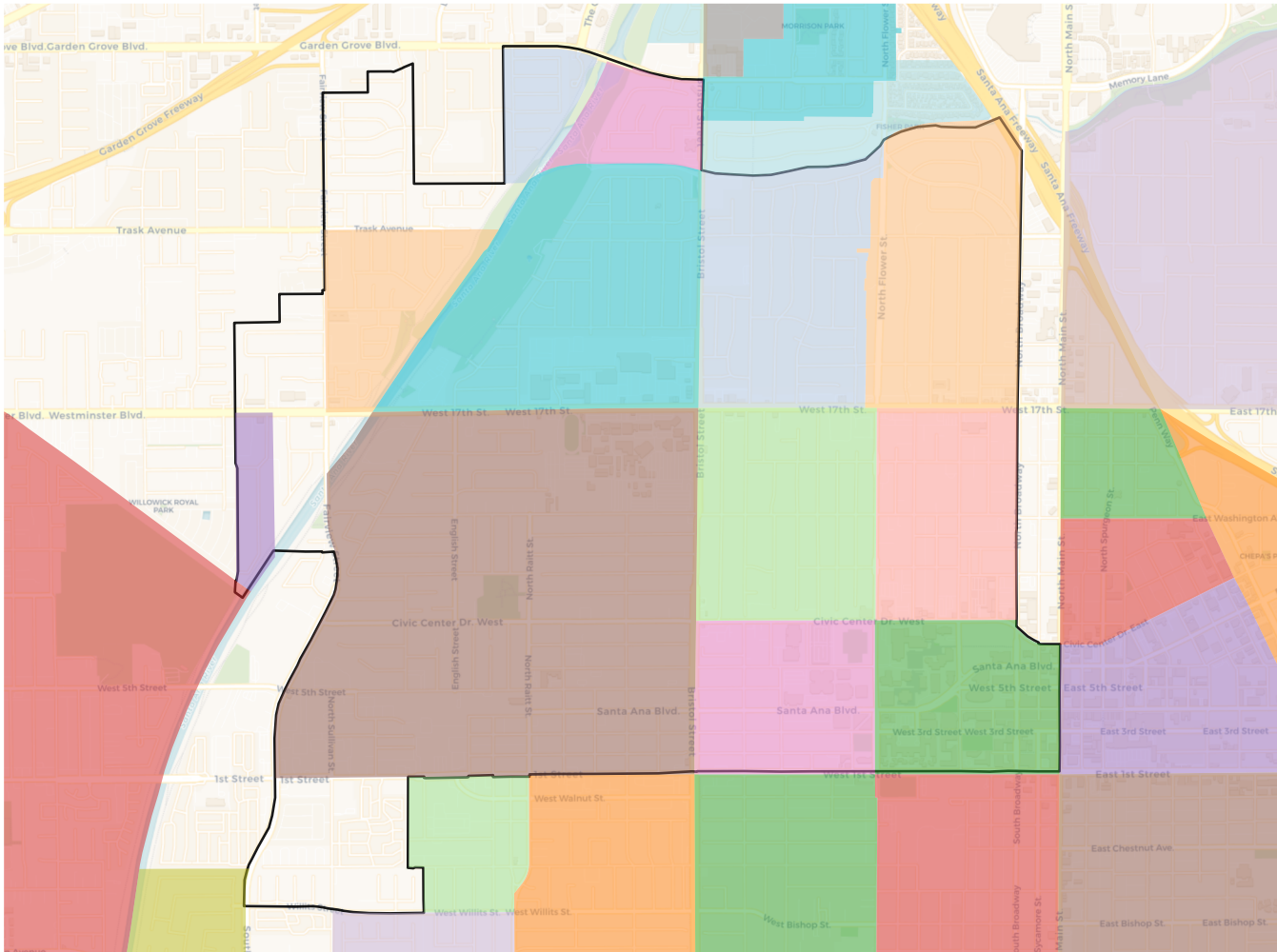


## Citizen Voting Age Population

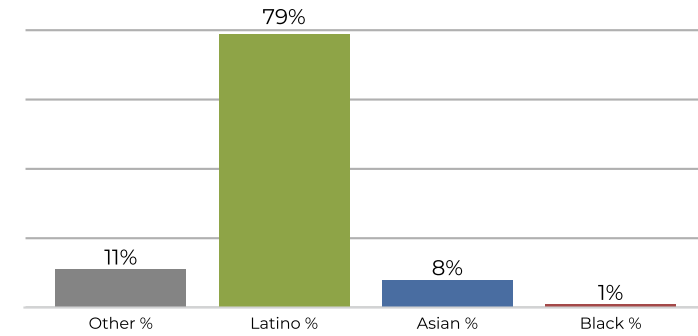


Population	Deviation	Deviation %	Other	Other %	Latino	Latino %	Asian	Asian %	Black	Black %
50,330	-1,612	-3.1%	1,692	3.4%	46,545	92.5%	1,745	3.5%	348	0.7%
Total CVAP	Other CVAP	Other CVAP %	Latino CVAP	Latino CVAP %	Asian CVAP	Asian CVAP %	Black CVAP	Black CVAP %		
19,358	1,512	7.8%	16,264	84.0%	1,229	6.3%	353	1.8%		

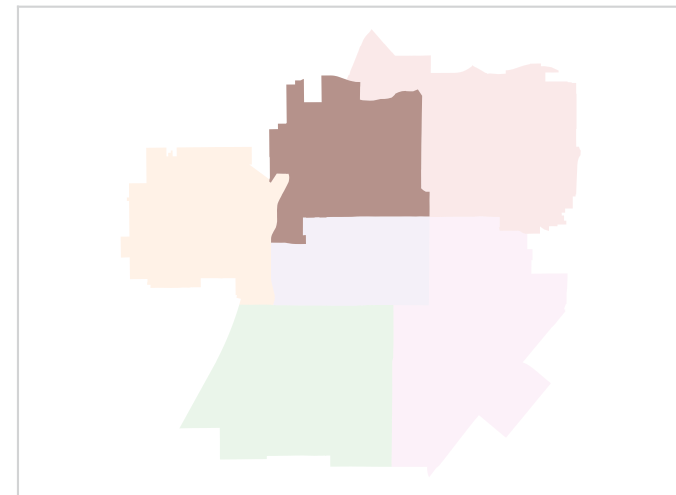
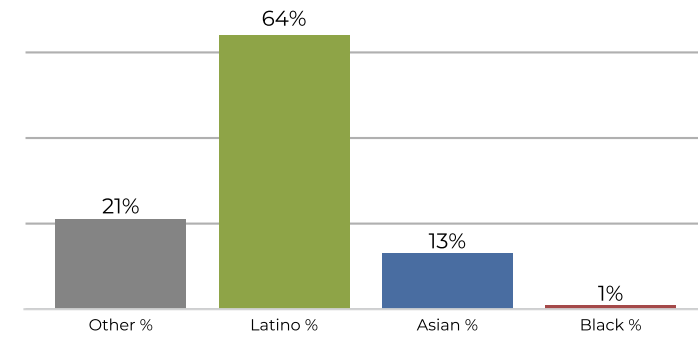
## District E



## 2020 Census

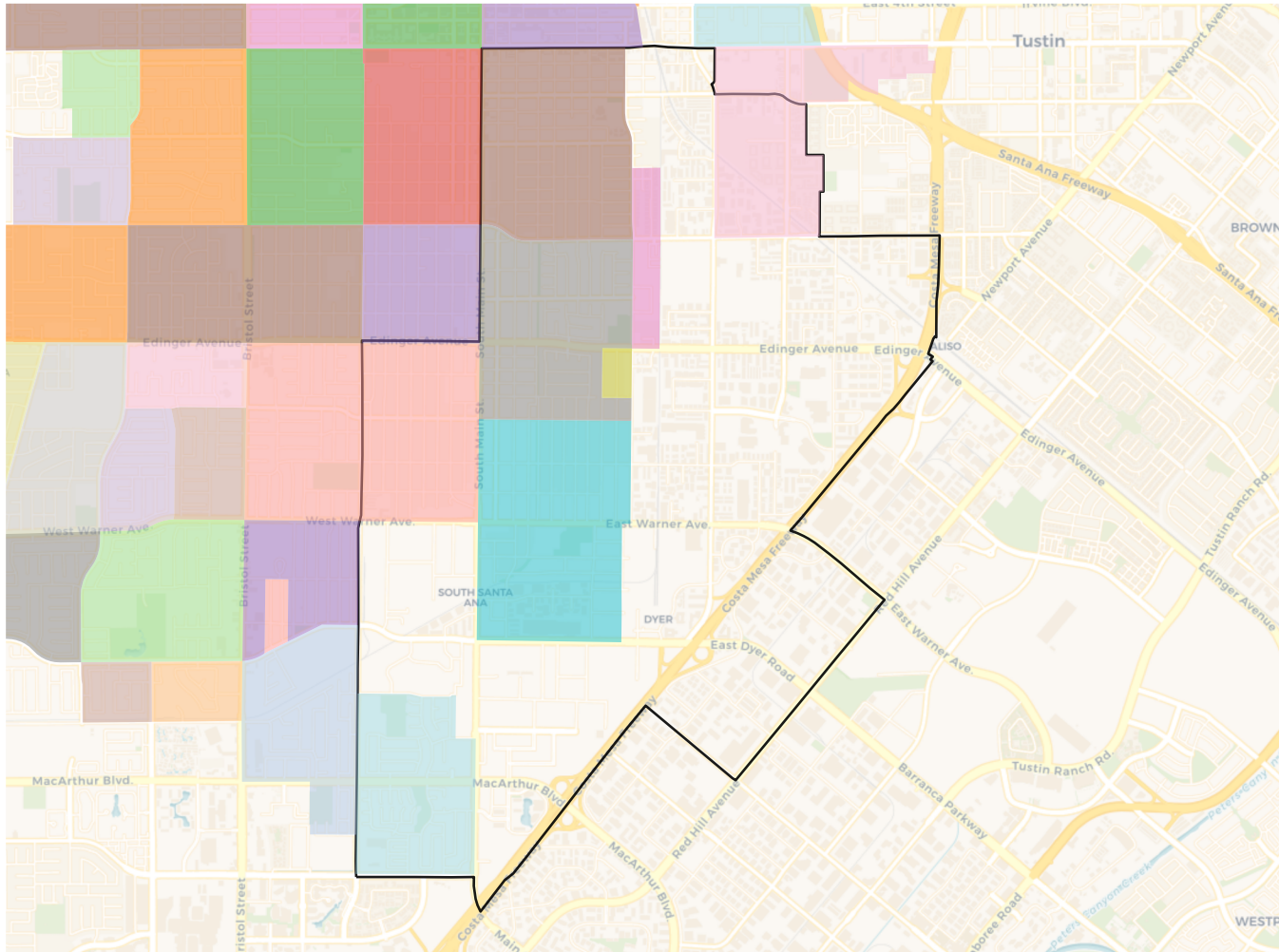


## Citizen Voting Age Population

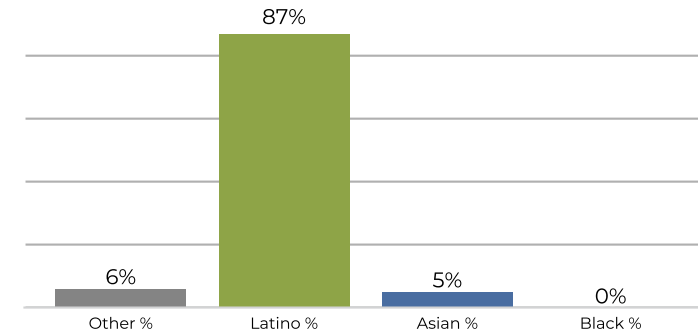


Population	Deviation	Deviation %	Other	Other %	Latino	Latino %	Asian	Asian %	Black	Black %
51,772	-170	-0.3%	6,065	11.7%	40,935	79.1%	4,151	8.0%	621	1.2%
Total CVAP	Other CVAP	Other CVAP %	Latino CVAP	Latino CVAP %	Asian CVAP	Asian CVAP %	Black CVAP	Black CVAP %		
23,603	5,024	21.3%	15,170	64.3%	3,159	13.4%	250	1.1%		

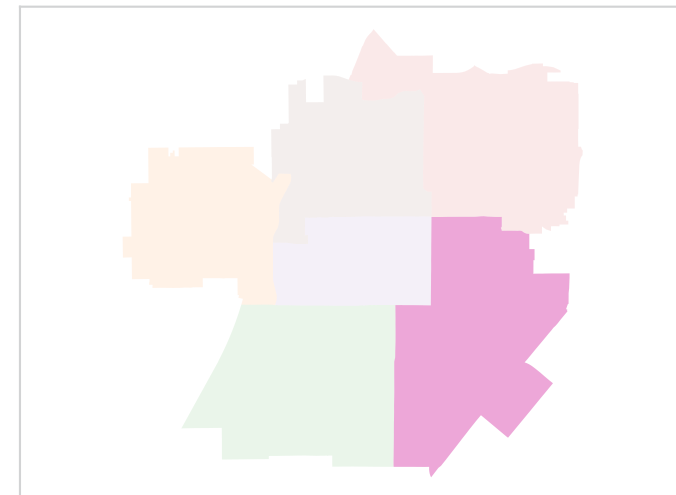
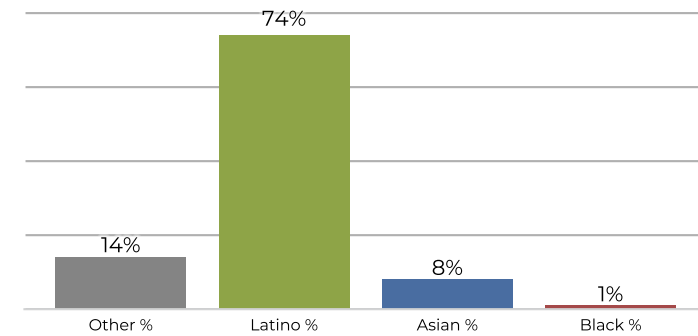
## District F



## 2020 Census



## Citizen Voting Age Population



Population	Deviation	Deviation %	Other	Other %	Latino	Latino %	Asian	Asian %	Black	Black %
54,374	2,432	4.7%	3,752	6.9%	47,309	87.0%	2,966	5.5%	347	0.6%
Total CVAP	Other CVAP	Other CVAP %	Latino CVAP	Latino CVAP %	Asian CVAP	Asian CVAP %	Black CVAP	Black CVAP %		
24,519	3,642	14.9%	18,376	74.9%	2,151	8.8%	350	1.4%		